



Newsletter

May 2011

5255 Douglas Blvd. Granite Bay, Ca. 916-791-4199
www.bushnellgardens.com

Store Hours
 Monday thru Saturday 9Am to 6 Pm
 Sunday 9 Am to 5 Pm

MAY CLINICS

SATURDAY MAY 14 @ 10 AM
SUMMER PRUNING JAPANESE MAPLES, SHADE & FRUIT TREES & CERTAIN PERENNIALS & SHRUBS
 JOIN HORTICULTURISTS TIM & JEANNIE FOR AN INFORMATIVE CLINIC DISCUSSING THIS WARM WEATHER PRUNING TECHNIQUE. QUESTION & ANSWER PERIOD TO FOLLOW

SATURDAY MAY 21 @ 10 AM
VEGETABLE GARDENING- IT'S NOT TOO LATE!!
 LEARN A BIT ABOUT VEGETABLE GARDENS, COMPANION PLANTING AND EDIBLE FLOWERS.

HOPE YOU WILL BE ABLE TO JOIN US !

MAY SALE ITEMS

A CHANCE TO PASS THE SAVINGS ON TO YOU

- ALL JAPANESE MAPLES**
 ANY VARIETY AND SIZE **20% OFF**
 WE GROW SO MANY VARIETIES AND SIZES OF THESE BEAUTIES. NOW IS THE TIME TO PICK YOUR FAVORITES!!
- ALL 5 GAL. NEW ZEALAND TEA \$ 19.98**
 WE HAVE THIS WONDERFUL SPRING FLOWERING SHRUB IN THREE VARIETIES. ALL BEAUTIFUL, DROUGHT TOLERANT AND FULL SUN CHARMERS. PREVENTS SCURVY ON LONG OCEAN VOYAGES TOO!
- HOST 'AZURE SNOW' 2 GAL \$ 20.99**
 WOW! 2 GALLON HOSTA. INSTANT WOW FOR THE SHADE GARDEN. DON'T FORGET THE SNAILS ADORE THEM. LAVENDER 'HONEY BELL' FLOWERS.
- ALL COLUMBINES BUY 2 GET 1 FREE**
 WONDERFUL WOODLAND SHADE GARDEN PLANTS WITH ADORABLE FLOWERS. DEAD HEAD SPENT FLOWERS TO PROLONG BLOOM
- ACORUS GRASS 'OGON' BUY 2 GET 1 FREE**
 GREAT GOLDEN EVERGREEN SHORT GRASS LIKE PLANT. LOOKS AWESOME UNDER RED JAPANESE MAPLES (HINT, HINT)

CHECK OUT THE GARDEN SHOPPE FOR DÉCOR SALES!!

LIMITED TO STOCK ON HAND* ALL SALES FINAL* NOT VALID WITH OTHER OFFERS

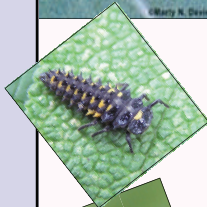


GOOD GUYS IN THE GARDEN DO YOU RECOGNIZE THEM?

Ladybug eggs are usually laid on the back of the leaf.
 The eggs hatch and you have the ladybug larva. These are voracious aphid eaters.
 The larva finds a quiet spot on a wall or stem where it pupates and turns into ...A Ladybug!

And we start all over again.

WE SELL LADY BUGS AND PRAYING MANTIS EGG CASES IN THE NURSERY



- 1 package of ladybugs (aprox. 1,500) \$7.98
- 1 praying mantis egg case (aprox 300 hatchlings) \$7.98

GARDEN JOBS – May

- ◆ Mulch plants to control weeds and conserve moisture. Keep mulch a few inches away from the base of all plants.
- ◆ Summer flowers, not fed with slow-release fertilizer, need feeding now.
- ◆ Check citrus for scale disease. Control with horticultural oil.
- ◆ Deadhead flowering plants to encourage more blooms.
- ◆ Watch for powdery mildew on roses, grapes, and crape myrtles. Spray with sulfur or potassium bicarbonate.
- ◆ Be ready to deep water trees and shrubs when the heat hits. Build water basins but be sure water drains within several hours. Standing water at trunks encourages disease.
- ◆ Begin to fertilize vegetables monthly.
- ◆ Thin fruit trees. Leave a space the size of the fruit between each remaining fruit.
- ◆ Deter birds with netting or strips of shiny mylar or foil.
- ◆ Prune and shape spring-flowering shrubs when bloom is finished.
- ◆ Lightly trim and shape azaleas, fuchsias, and marguerites for fullness.
- ◆ Remember to feed indoor house plants. If you use slow-release fertilizer, mark the date you need to feed again on your calendar.

MOTHER'S DAY SUNDAY MAY 8 TH



DID YOU KNOW???

WE GROW MOST OF OUR OWN PLANT MATERIAL, AGNES, RUTA, ITZEL & SHELBY PLANT ALL OF THE CONTAINER AND HANGING GARDENS, AND NOW WE ARE GROWING OUR OWN HEIRLOOM VEGETABLES, AS WELL AS ANNUALS & CUT FLOWERS!!

(TOOTIN' OUR OWN HORN-CAN'T HELP IT, WE'RE PROUD)

NEW PRODUCT (WELL ALMOST NEW!)

Bayer Advanced

Fruit, Citrus & Vegetable Insect Control

Systemic insecticide drench for use on fruit, citrus and vegetable plants including nut trees, fruit trees and citrus. Season long protection, kills insects and prevents further infestations.

Weather proof.



Problems with Powdery Mildew? Make your own spray using 2 Tbs. baking soda and 1 tsp. dish washing liquid in a gallon of water. Spray once a week until mildew is gone.

Introducing the new 'Bushnell WebBlast'

Last year the Bushnell Team had been faithfully delivering all of the monthly newsletters and coupons to your e-mail inbox thru our old eBlast system. Now, via our new website, we have developed a new WebBlast system to deliver your monthly emails. We apologize to those of you who have tried to un-subscribe in the past. With this new system you may choose which mailing you want to receive and may un-subscribe at any time.

Please, take a moment to join our new Bushnell eClub

Visit www.bushnellgardens.com

go to the Bushnell eClub box in the sidebar on the right and choose

Once you've joined we will be able to send you exclusive eClub Coupons, Newsletters, and Sales Alerts

Bushnell eClub
Sign Up/Update profile